

PREMIER RANGE

BY CAMTECH

2020
edition #2



CONTENTS

04-15.
Red/Orange

16-17.
Buff/Yellow

18-20.
Grey

21-23.
White/Black/Brown

TIPS & ADVICE

Getting the perfect look for your project!

- * The product images shown are for illustration purposes only and may not be an exact representation of the brick. Please request samples to help you select the best products for your project.
- * Due to the nature of clay bricks, there may be subtle variations in colour per production.
- * We highly recommend that the full brick requirement for your project is ordered in one complete order, with a relating call-off schedule to allow for consistency through production/batching of bricks.
- * The bricks in our Premier range are suited to every building style and have the necessary characteristics required for contemporary facing bricks.
- * All bricks in this brochure comply with European Standards - EN 771-1.
- * Test Certificates (Technical Data Sheets) - Available on Request.
- * We reserve the right to change or update the products, specifications, and packaging at any time without notice.

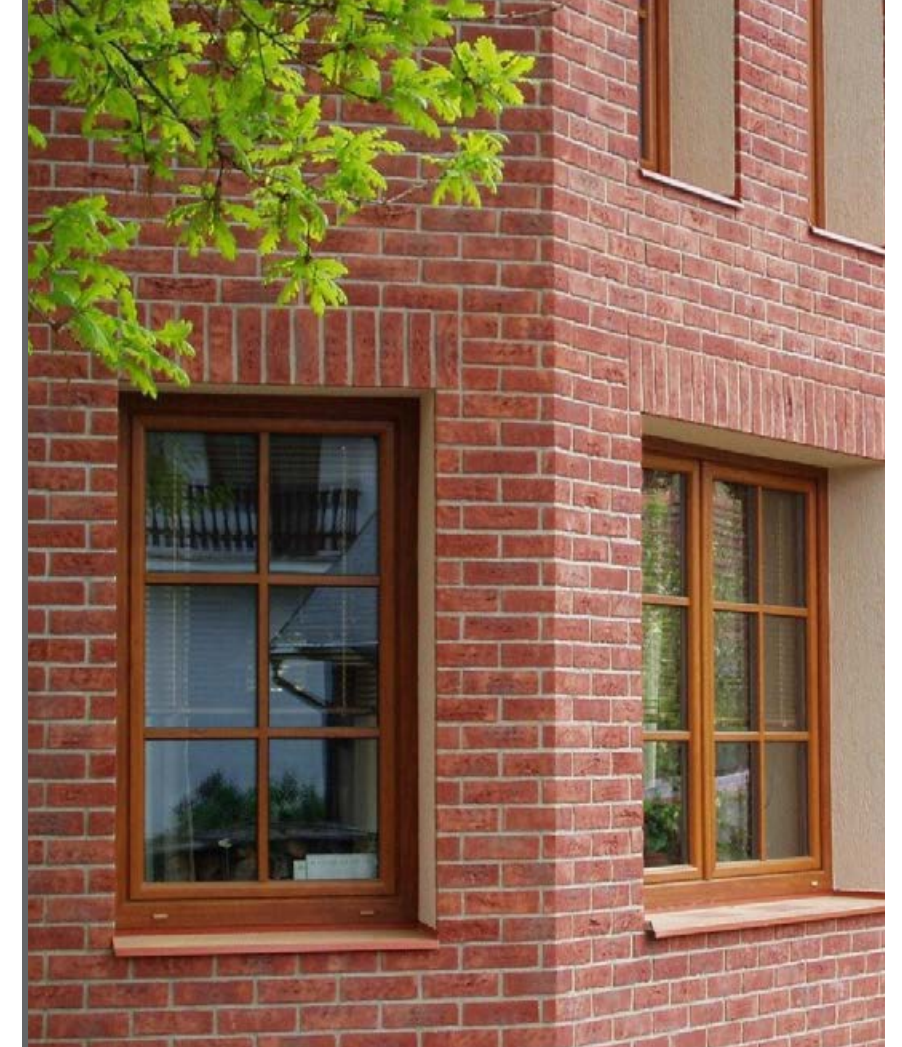
For Premier Range samples or further information - connect with one of our brick specialists.

They're always happy to offer friendly advice and help you select the right bricks for your project!

+44 (0)1763 262006

Info@camtechbp.co.uk
www.camtechbp.co.uk

**P R E M I E R
B Y C A M T E C H**



For many years, our principal area of expertise has been Brick & Stone. In this arena, Camtech has become a preferred supplier and technical resource to many of the UK's building merchants, brick supply companies, developers, contractors and architects.

Today, as a result of our investment in and commitment to brick manufacturing partners throughout the UK & Europe, Camtech has developed an extensive portfolio of high-quality facing bricks. Bricks with 'Camtech DNA' specially made for the UK market.

Inside our Premier Range brochure, you will discover a comprehensive array of colours, styles and blends. Suitable for all types of projects, contemporary and traditional.

We hope that you like these as much as we do!

However, if you can't find your perfect brick here, why not speak with one of our brick specialists? They're always on hand to guide you through our products and keen to help you select the most suitable brick type for your project.

In addition to our exclusive brick ranges, we can also offer an exciting array of building products from across Europe.

To find out more about the Camtech range of products, speak to one of the team on, 01763 262006 - we'd be delighted to help.

Greg McClean
Managing Director

31

Exciting bricks in an array of colours, styles and blends.

This Camtech range is well suited to contemporary or traditional projects.



Anglian Red Stock

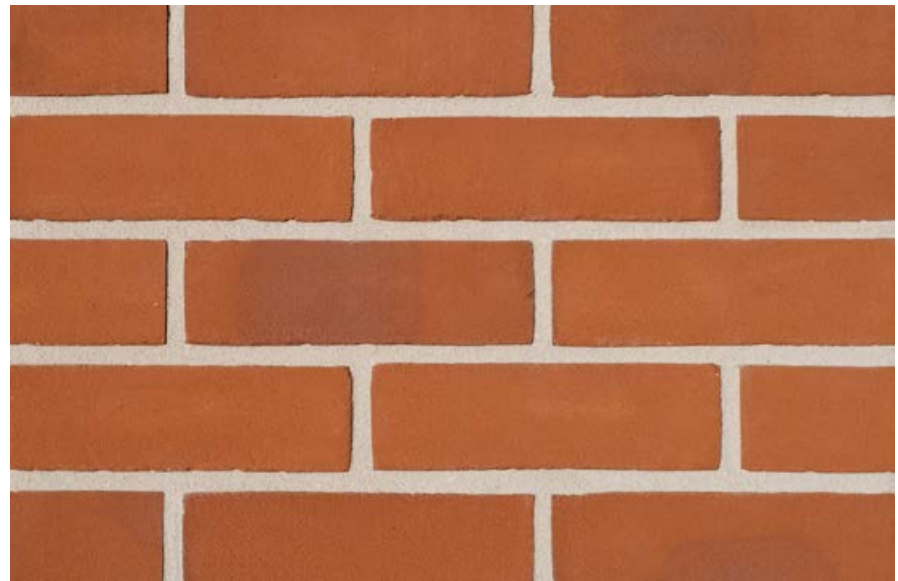
17 Red & Orange



Anglian Orange Handmade
CBP-CAP-DCMO

i

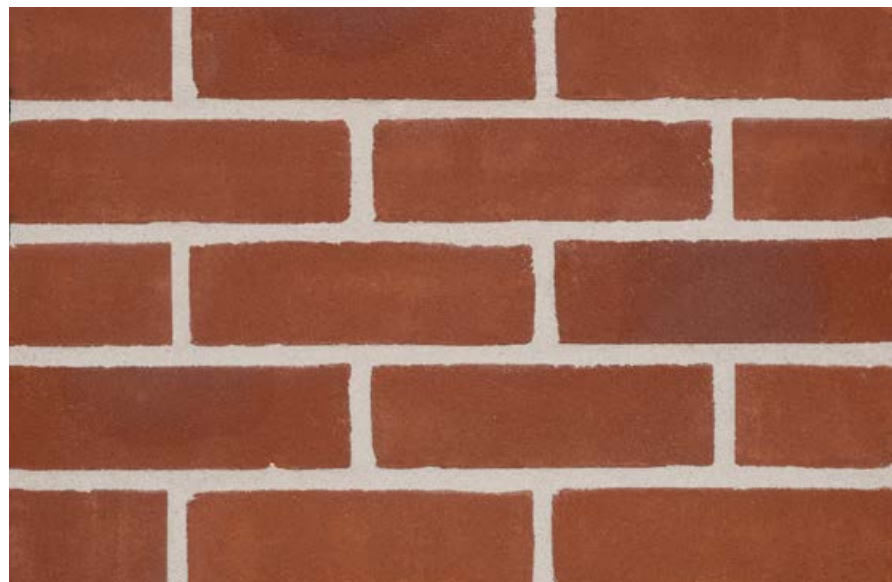
Format	EF
Dimensions (LxWxH) mm	215x102x65
Pack Size	600 St/Pal
Pack Weight (kg)	1404
Load Size	12,000
Size Tolerance	T2
Mean & Range	R1
Durability/Frost Resistance	F2
Fire Reaction/Euroclass	A1



Anglian Orange Stock
CBP-CAP-DVMO

i

Format	EF
Dimensions (LxWxH) mm	215x102x65
Pack Size (St/Pal)	600
Pack Weight (kg)	1422
Load Size	12,000
Size Tolerance	T2
Mean & Range	R1
Durability/Frost Resistance	F2
Fire Reaction/Euroclass	A1



Anglian Red Stock
CBP-CAP-DVMA

i

Format	EF
Dimensions (LxWxH) mm	215x102x65
Pack Size	600 St/Pal
Pack Weight (kg)	1458
Load Size	12,000
Size Tolerance	T2
Mean & Range	R1
Durability/Frost Resistance	F2
Fire Reaction/Euroclass	A1



Anglian Red Handmade
CBP-CAP-DCRP

i

Format	EF
Dimensions (LxWxH) mm	215x102x65
Pack Size	600 St/Pal
Pack Weight (kg)	1392
Load Size	12,000
Size Tolerance	T2
Mean & Range	R1
Durability/Frost Resistance	F2
Fire Reaction/Euroclass	A1



Orange Red Stock
CBP-CAP-DVMO-DVMA



Format	EF
Dimensions (LxWxH) mm	215x102x65
Pack Size	600 St/Pal
Pack Weight (kg)	1452
Load Size	12,000
Size Tolerance	T2
Mean & Range	R1
Durability/Frost Resistance	F2
Fire Reaction/Euroclass	A1



Orange Red Handmade
CBP-CAP-DCMO-DCRP



Format	EF
Dimensions (LxWxH) mm	215x102x65
Pack Size	600 St/Pal
Pack Weight (kg)	1398
Load Size	12,000
Size Tolerance	T2
Mean & Range	R1
Durability/Frost Resistance	F2
Fire Reaction/Euroclass	A1



Ashbury Handmade
CBP-CAP-DCEMA-B



Format	EF
Dimensions (LxWxH) mm	215x102x65
Pack Size	600 St/Pal
Pack Weight (kg)	1446
Load Size	12,000
Size Tolerance	T2
Mean & Range	R1
Durability/Frost Resistance	F2
Fire Reaction/Euroclass	A1



The Camtech Premier Range production is at an eco-friendly facility on the bank of the River Rhine, Holland.

We tasked their experienced team to create a selection of high-quality clay facing bricks specifically for the UK Market. You can see the spectacular results here in the 31 brick variations. We hope that you find something in this range that meets your requirement; however, if you can't find your perfect brick here, why not speak with one of our brick specialists? They're always on hand to guide you through our products and keen to help you select the most suitable brick for your project.

Contact us today about our Premier Range; we'd be delighted to help!
T. 01763 262006



Red Multi Stock



Red Multi Stock CBP-CAP-DVEMA-B



Format	EF
Dimensions (LxWxH) mm	215x102x65
Pack Size	600 St/Pal
Pack Weight (kg)	1446
Load Size	12,000
Size Tolerance	T2
Mean & Range	R1
Durability/Frost Resistance	F2
Fire Reaction/Euroclass	A1



Ashwell Red Multi Handmade CBP-CAP-DCMO-DCEMA-B



Format	EF
Dimensions (LxWxH) mm	215x102x65
Pack Size	600 St/Pal
Pack Weight (kg)	1444
Load Size	12,000
Size Tolerance	T2
Mean & Range	R1
Durability/Frost Resistance	F2
Fire Reaction/Euroclass	A1



Manor Red Multi Stock CBP-CAP-DVMO-DVEMA-B



Format	EF
Dimensions (LxWxH) mm	215x102x65
Pack Size	600 St/Pal
Pack Weight (kg)	1444
Load Size	12,000
Size Tolerance	T2
Mean & Range	R1
Durability/Frost Resistance	F2
Fire Reaction/Euroclass	A1



Montrea Handmade
CBP-CAP-DCER



Format	EF
Dimensions (LxWxH) mm	215x102x65
Pack Size	600 St/Pal
Pack Weight (kg)	1404
Load Size	12,000
Size Tolerance	T2
Mean & Range	R1
Durability/Frost Resistance	F2
Fire Reaction/Euroclass	A1



Berwick Multi
CBP-CAP-DCRP-CD



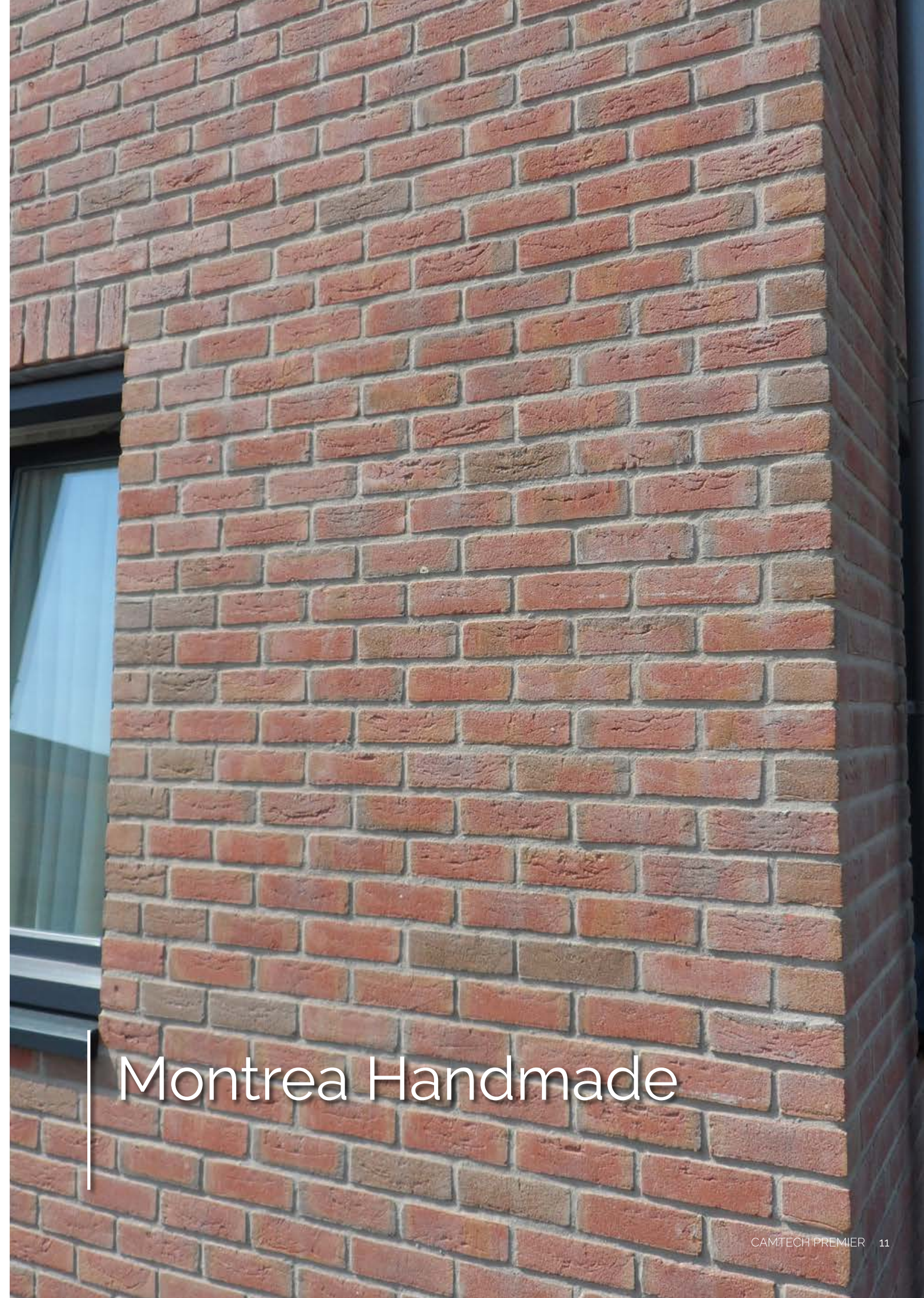
Format	EF
Dimensions (LxWxH) mm	215x102x65
Pack Size	600 St/Pal
Pack Weight (kg)	1392
Load Size	12,000
Size Tolerance	T2
Mean & Range	R1
Durability/Frost Resistance	F2
Fire Reaction/Euroclass	A1



Snowdon Blend
CBP-CAP-DCMO-CD



Format	EF
Dimensions (LxWxH) mm	215x102x65
Pack Size	600 St/Pal
Pack Weight (kg)	1404
Load Size	12,000
Size Tolerance	T2
Mean & Range	R1
Durability/Frost Resistance	F2
Fire Reaction/Euroclass	A1

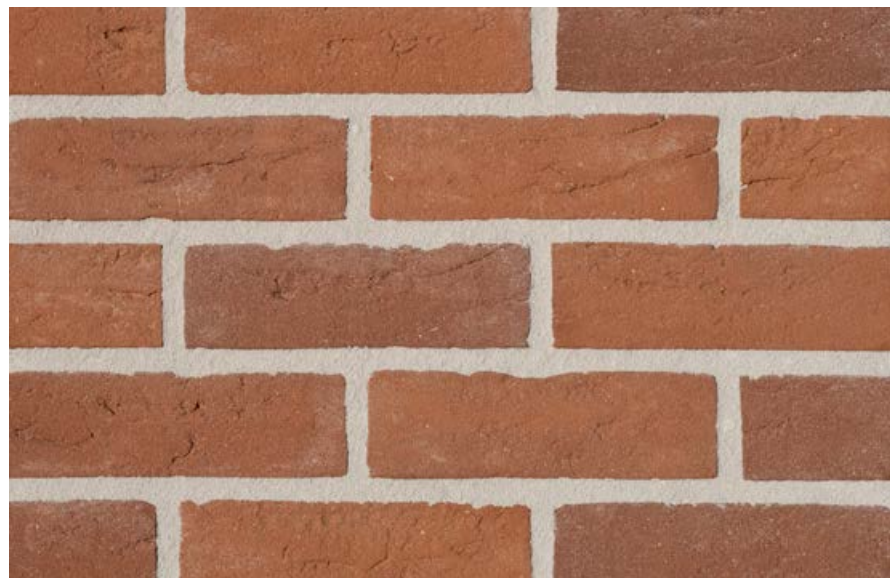


Montrea Handmade



Baccara Handmade

...Red & Orange



Troika Handmade
CBP-CAP-DCR

i

Format	EF
Dimensions (LxWxH) mm	215x102x65
Pack Size	600 St/Pal
Pack Weight (kg)	1386
Load Size	12,000
Size Tolerance	T2
Mean & Range	R1
Durability/Frost Resistance	F2
Fire Reaction/Euroclass	A1



Kaba Handmade
CBP-CAP-DCEMOW-B

i

Format	EF
Dimensions (LxWxH) mm	215x102x65
Pack Size	600 St/Pal
Pack Weight (kg)	1440
Load Size	12,000
Size Tolerance	T2
Mean & Range	R1
Durability/Frost Resistance	F2
Fire Reaction/Euroclass	A1



Baccara Handmade
CBP-CAP-DCERP

i

Format	EF
Dimensions (LxWxH) mm	215x102x65
Pack Size	600 St/Pal
Pack Weight (kg)	1416
Load Size	12,000
Size Tolerance	T2
Mean & Range	R1
Durability/Frost Resistance	F2
Fire Reaction/Euroclass	A1



Moulton Handmade
CBP-CAP-DCEMOW

i

Format	EF
Dimensions (LxWxH) mm	215x102x65
Pack Size	600 St/Pal
Pack Weight (kg)	1440
Load Size	12,000
Size Tolerance	T2
Mean & Range	R1
Durability/Frost Resistance	F2
Fire Reaction/Euroclass	A1



Ashbury Handmade



Weathered Cream Handmade
CBP-CAP-DCGZ-D



Format	EF
Dimensions (LxWxH) mm	215x102x65
Pack Size	600 St/Pal
Pack Weight (kg)	1260
Load Size	12,000
Size Tolerance	T2
Mean & Range	R1
Durability/Frost Resistance	F2
Fire Reaction/Euroclass	A1



Weathered Cream Stock
CBP-CAP-DVGZ-D



Format	EF
Dimensions (LxWxH) mm	215x102x65
Pack Size	600 St/Pal
Pack Weight (kg)	1260
Load Size	12,000
Size Tolerance	T2
Mean & Range	R1
Durability/Frost Resistance	F2
Fire Reaction/Euroclass	A1



Anglian Cream Handmade
CBP-CAP-DCGZ



Format	EF
Dimensions (LxWxH) mm	215x102x65
Pack Size	600 St/Pal
Pack Weight (kg)	1278
Load Size	12,000
Size Tolerance	T2
Mean & Range	R1
Durability/Frost Resistance	F2
Fire Reaction/Euroclass	A1



4 Buff & Yellow



Anglian Cream Stock
CBP-CAP-DVGZ



Format	EF
Dimensions (LxWxH) mm	215x102x65
Pack Size	600 St/Pal
Pack Weight (kg)	1278
Load Size	12,000
Size Tolerance	T2
Mean & Range	R1
Durability/Frost Resistance	F2
Fire Reaction/Euroclass	A1

6 Grey



Bromo Handmade



Bromo Handmade CBP-CAP-DCNG-C



Format	EF
Dimensions (LxWxH) mm	215x102x65
Pack Size	600 St/Pal
Pack Weight (kg)	1320
Load Size	12,000
Size Tolerance	T2
Mean & Range	R1
Durability/Frost Resistance	F2
Fire Reaction/Euroclass	A1



Fuji Handmade CBP-CAP-DCNG-D



Format	EF
Dimensions (LxWxH) mm	215x102x65
Pack Size	600 St/Pal
Pack Weight (kg)	1296
Load Size	12,000
Size Tolerance	T2
Mean & Range	R1
Durability/Frost Resistance	F2
Fire Reaction/Euroclass	A1



Osorno Handmade CBP-CAP-DCNG-GR



Format	EF
Dimensions (LxWxH) mm	215x102x65
Pack Size	600 St/Pal
Pack Weight (kg)	1320
Load Size	12,000
Size Tolerance	T2
Mean & Range	R1
Durability/Frost Resistance	F2
Fire Reaction/Euroclass	A1



Light Grey Handmade
CBP-CAP-DCNG



Format	EF
Dimensions (LxWxH) mm	215x102x65
Pack Size	600 St/Pal
Pack Weight (kg)	1296
Load Size	12,000
Size Tolerance	T2
Mean & Range	R1
Durability/Frost Resistance	F2
Fire Reaction/Euroclass	A1



100% Dark Fuji Handmade
CBP-CAP-DCNG-DD



Format	EF
Dimensions (LxWxH) mm	215x102x65
Pack Size	600 St/Pal
Pack Weight (kg)	1308
Load Size	12,000
Size Tolerance	T2
Mean & Range	R1
Durability/Frost Resistance	F2
Fire Reaction/Euroclass	A1



All-White Bromo
CBP-CAP-DCNG-CW



Format	EF
Dimensions (LxWxH) mm	215x102x65
Pack Size	550 St/Pal
Pack Weight (kg)	1320
Load Size	12,000
Size Tolerance	T2
Mean & Range	R1
Durability/Frost Resistance	F2
Fire Reaction/Euroclass	A1



4 White/Black/Brown



Bromo Fuji Blend
CBP-CAP-DCNG-C-DCNG-D



Format	EF
Dimensions (LxWxH) mm	215x102x65
Pack Size	600 St/Pal
Pack Weight (kg)	1476
Load Size	12,000
Size Tolerance	T2
Mean & Range	R1
Durability/Frost Resistance	F2
Fire Reaction/Euroclass	A1



White Handmade
CBP-CAP-DCW



Format	EF
Dimensions (LxWxH) mm	215x102x65
Pack Size	600 St/Pal
Pack Weight (kg)	1476
Load Size	12,000
Size Tolerance	T2
Mean & Range	R1
Durability/Frost Resistance	F2
Fire Reaction/Euroclass	A1



Merlot Handmade
CBP-CAP-DCMRZW



Format	EF
Dimensions (LxWxH) mm	215x102x65
Pack Size	600 St/Pal
Pack Weight (kg)	1428
Load Size	12,000
Size Tolerance	T2
Mean & Range	R1
Durability/Frost Resistance	F2
Fire Reaction/Euroclass	A1



Black Handmade
CBP-CAP-DCZW



Format	EF
Dimensions (LxWxH) mm	215x102x65
Pack Size	600 St/Pal
Pack Weight (kg)	1506
Load Size	12,000
Size Tolerance	T2
Mean & Range	R1
Durability/Frost Resistance	F2
Fire Reaction/Euroclass	A1



White Handmade

We can help you select the best brick for your project!

Take a closer look at your favourite Premier bricks.

Just ask for samples!

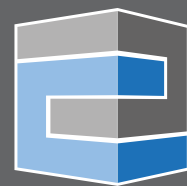


Connect with one of our brick specialists.

They're always on hand to guide you through our products and keen to help you select the best brick for your project!

+44 (0)1763 262006

**Info@camtechbp.co.uk
www.camtechbp.co.uk**



CAMTECH

CAMTECH BUILDING PRODUCTS LTD

p. Camtech House, 21 Jarman Way
Royston, Herts, SG8 5HW. UK

t. +44 (0)1763 262006

e. info@camtechbp.co.uk

w. camtechbp.co.uk

